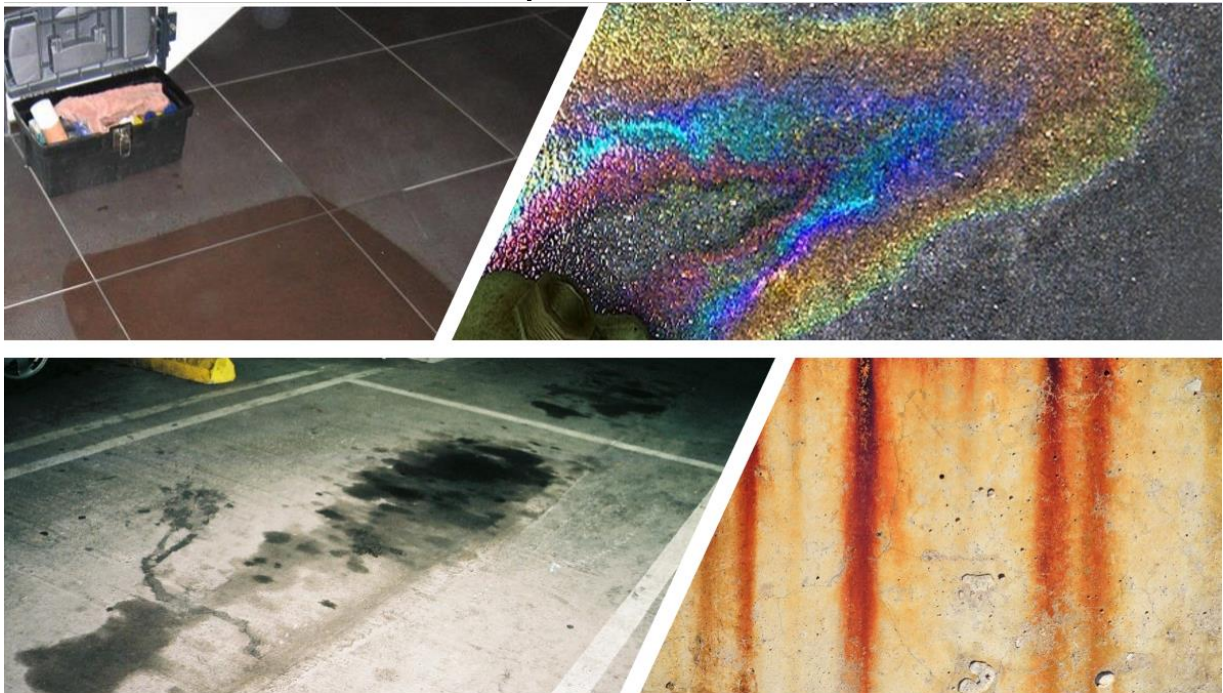


Technical Data Sheet

DK NET Intensive Cleaner

Version 1.2
Date 03.06.21

This version replaces all previous ones.



DK-NET Intensive Cleaner is an extremely effective product with double action.

On the one hand, it is a professional, concentrated cleaner to remove dirt and residues after completion of a construction site: cement veil and slurry, plaster residue, lime, rust, etc.

On the other hand, it allows the degreasing of concrete floors before painting or renovating (gas station areas, composite pavements, industrial floors). It destroys and dissolves urban dirt: impurities, hydrocarbons, oils, gasoline and others.

APPLICATIONS:

- Natural and artificial stones
- Ceramics
- Concrete and mortar
- Terracotta, brick and slate, fiber cements

HORIZONTAL - VERTICAL / INSIDE - OUTSIDE

It is recommended to treat the treated surface after cleaning with **MINERALIZER F2 PREMIUM** or **TF PREMIUM**.

CHARACTERISTICS:

- Penetrates deeply in the substrate
- Product in aqueous phase, non-flammable
- Contains no solvents, is without V. O. C. (volatile organic compounds) and, in accordance with Council Directive 1999/13 / EC, an organic product

TECHNICAL SPECIFICATIONS:

Color:	colorless
Odor:	acid (weak)
Solubility in water [vol/vol]:	fully
Physical state at 19 °C:	liquid
pH Value:	2± 1,0
Flashpoint [°C]:	none
Density:	1,2 +/- 0,03g/cm ³ at 20°C

PACKAGING UNITS:

Bottles: 1 liter and 5 liters.



IMPLEMENTATION:

Always test a small area before starting.

1. Diluting: Depending on the degree of soiling and the sensitivity of the substrate, use either pure or up to 5 times diluted DK NET.
2. Tools to apply: brush or sponge.
3. Procedure: Moisten the surface thoroughly beforehand. Apply the product to the surface and let it work for 5 to 10 minutes. The effectiveness of the product can be accelerated by mechanical action. Rinse thoroughly with water under pressure or with a jet of water before the product has completely dried.
Repeat if necessary.
4. Reaction time: 5 to 10 minutes.
5. Application temperature: From 5 °C to 50 °C. At extreme temperatures, the efficiency drops.
6. On limestone always dilute the product. Make sure you have a test in advance.

CONSUMPTION:

1 liter is sufficient, depending on dilution, for areas from 7 to 35 m².
Only tests make it possible to determine the consumption more precisely.

CLEANING THE EQUIPMENT:

Clean used tools and equipment with water immediately after use.

STORAGE:

Store in a cool, dry place at a temperature of over 5 °C.

USE RESTRICTIONS:

The following surfaces are not suitable for the product and must be protected: glass surfaces, aluminum or PVC frames and verandas, paints, woodwork, vehicles, metals, etc.

Do not apply on polished or shiny mineral materials. Do not use in strong winds. Do not use at frost hazard. Shake can before use.

Do not use on materials that are coated with paints or synthetic coatings.
Do not spray on plants and organic materials. Do not spray on metals.

RECOMMENDATIONS:

Work with gloves and glasses.

Protect painted surfaces, glass, metals and plants.

In case of accidental spraying, rinse immediately with water.

Do not use in wet or very hot weather. Do not dilute or mix with other products.

SAFETY:

H314: Causes severe skin burns and eye damage.

P101: If a doctor is consulted, have container or label ready.

P102: Keep out of reach of children.

P103: Read the label before use.

P260: Do not inhale vapors.

P280: Wear protective gloves / protective clothing / eye and face protection.

P301 + P330 + P331: In case of swelling: rinse mouth. DO NOT induce vomiting.

P303 + P361 + P353: In case of skin or hair contact: Remove contaminated clothing immediately. Rinse skin with water.

P304 + P340: In case of inhalation of the product: Take the victim to fresh air and make them rest in a position in which the breathing is pleasant and easy.

P305 + P351 + P338: Wear eye protection. In case of accidental eye contact rinse thoroughly with water. If necessary, remove contact lenses beforehand.

P363: Wash contaminated clothing before reuse.

P312: Call a POISON CONTROL CENTER or a doctor if you feel unwell.

P501: Dispose of contents / container in accordance with local regulations. Use precautionary measures.

For technical questions:

contact@protecd.com

www.protecd.com